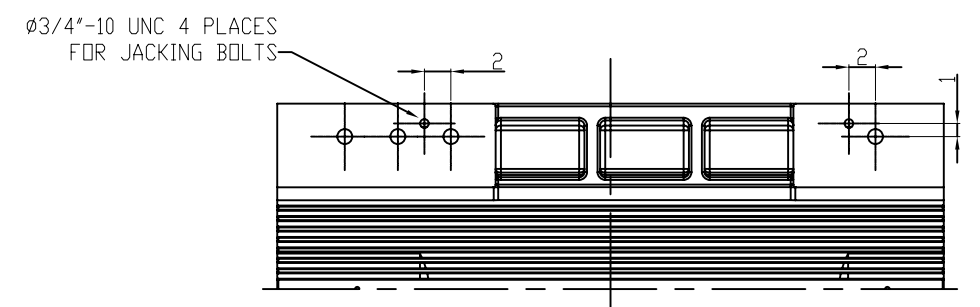
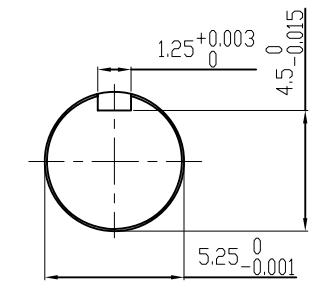


**TECHNICAL INFORMATION**

1. BEARING LUBRICATION DE: CHEVRON SRI  
ODE: CHEVRON SRI
2. BEARING TYPE DE: NU328C3  
ODE: 6322C3 INSULATED
3. WINDING TEMP. DETECTORS  
NUMBER AND TYPE: 6xRTD(Pt0°C-100ohm)  
LOCATION: IN STATOR SLOT
4. BEARING TEMP. DETECTORS  
NUMBER AND TYPE: \_\_\_\_\_
5. SPACE HEATER 1 PHASE  
VOLTS: 120 WATTS: 200
6. ROTATION: CCW VIEWED FROM NON DRIVE END  
THIS MOTOR IS BI DIRECTIONAL
7. MOTOR PAINT COLOR: GRAY
8. APPROX. WEIGHT: 7000 Lbs
9. ACCESORIES:



UNITS: INCHES

DRAWING LIST		MOTOR OUTLINE FOR THREE PHASE INDUCTION MOTOR													
MAIN TERMINAL BOX 130-7622-55		CUSTOMER NAME			P.O. NO.		MOTOR TAG NO.								
AUX TERMINAL BOX FOR		OUTPUT HP	POLE 4-8	VOLTAGE V	FREQUENCY Hz	FULL LOAD SPEED (min <sup>-1</sup> )		TOSHIBA MODEL NO.							
SPACE HEATER	130-7520-50	TYPE	FORM	INS. CLASS F	RATING CONT.	FRAME 5809/10/11UZ		S.F.	ENCLOSURE TEFC						
R.T.D.	130-7522-51	TOSHIBA INTERNATIONAL CORPORATION HOUSTON, TEXAS U.S.A.													
THERMISTOR	N/A	3rd ANGLE PROJ.		PREPARED BY: B SIDLE		DATE: 4/24/07		CHECKED BY: S Johnson		DATE: 4/26/07		DRAWING NO.: MDSL0071-19		REV. 0	
PRODUCTION #	N/A	NO.	REVISION		BY	DATE									