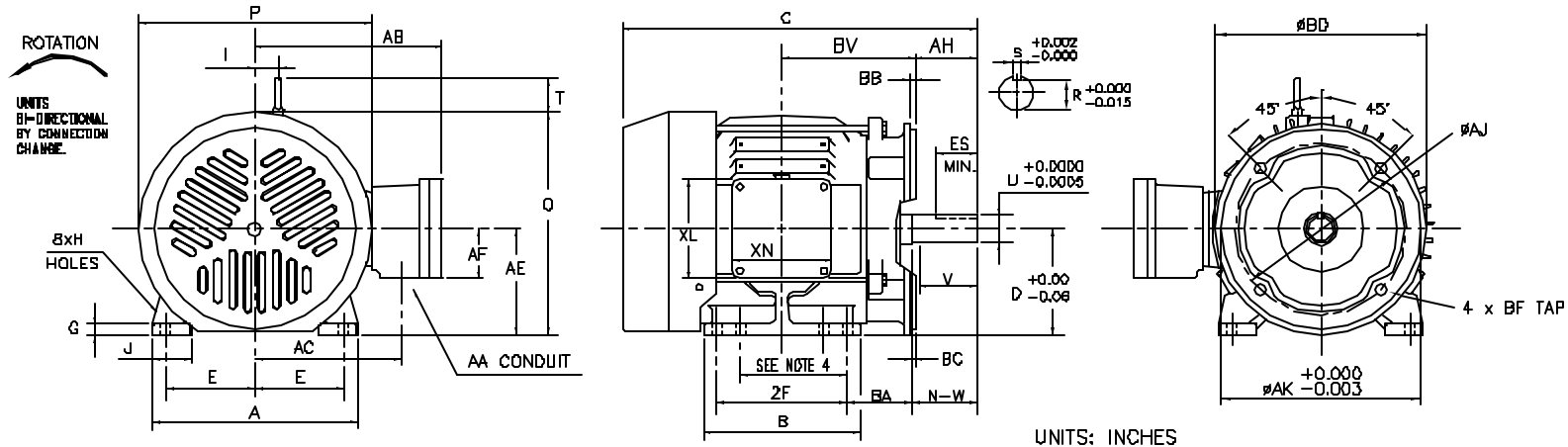


INDEX	MDSL0046-02
REV. LEVEL	0
SHEET	1 OF 1



FRAME SIZE	MOUNTING				FLANGE							
	E	2F	H	BA	AH	AJ	AK	BB	BC	BD	BF TAP	BV
182TC	3.75	4.50	0.44	2.75	2.62	7.250	8.500	D.25	0.13	8.94	1/2"-13UNC	5.13
184TC	3.75	5.50	0.44	2.75	2.62	7.250	8.500	D.25	0.13	8.94	1/2"-13UNC	5.63

FRAME SIZE	MOTOR DIMENSIONS										CONDUIT BOX						
	A	B	C	D	G	I	J	O	P	T	AA	AB	AC	AE	AF	XL	XN
182TC/184TC	8.7	6.6	15.5	4.50	0.5	1.0	1.6	9.4	9.8	1.7	0.75	8.3	6.4	4.5	3.2	6.1	4.8

FRAME SIZE	SHAFT EXTENSION			KEY SEAT			BEARINGS		MAXIMUM WEIGHT
	N-W	V	U	R	S	ES	LS	OS	
182TC/184TC	2.75	2.50	1.125	0.986	0.250	1.78	6306UUC3	6306UUC3	120 lbs.

- NOTES:
1. DIMENSION V REPRESENTS LENGTH OF STRAIGHT PART OF SHAFT.
 2. CONDUIT BOX MAY BE ROTATED IN 90° INCREMENTS AND MAY BE MOUNTED ON OPPOSITE SIDE ON SPECIAL ORDER.
 3. KEY DIMENSIONS EQUAL S x S x 1.75 (MOTOR SUPPLIED WITH KEY)
 4. DIMENSIONS FOR 182T MOUNTING EQUAL (2F) LOCATED IN 182T SIDE VIEW.
 5. MOTOR WEIGHT SHOWN IS MAXIMUM HORSEPOWER IN FRAME.

ALL DATA SUBJECT TO CHANGE WITHOUT NOTICE FOR CONSTRUCTION USE ONLY CERTIFIED DATA

CERTIFIED DATA

CUSTOMER: _____ P.O. NO.: _____ TAG NO.: _____
 MOTOR MODEL NO.: _____ TOSHIBA FILE NO.: _____
 HP: _____ RPM (SYN.): _____ VOLTAGE: _____ Hz: _____
 FRAME SIZE: _____ LOG NO.: _____ LOG REV. LEVEL: _____
 REMARKS: _____
 PER: _____ ISSUE DATE: _____ SUPERSEDES: _____

TOSHIBA/HOUSTON
EXPLOSION PROOF
 HAZARDOUS LOCATION
 CLASS I GROUP D
 CLASS II GROUP E, F, AND G

TOTALLY-ENCLOSED
FAN-COOLED
FOOT-MOUNTED
WITH C-FACE FLANGE
Fr. 182TC-184TC

SL004802