

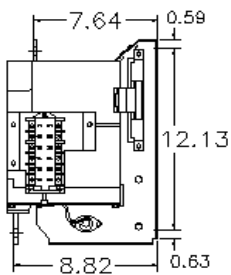
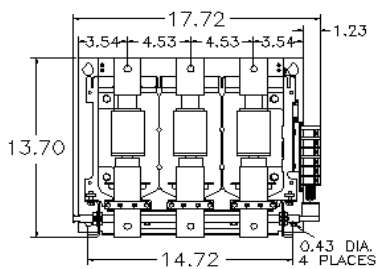
LOW & MEDIUM VOLTAGE VACUUM CONTACTORS

Toshiba Offers Superior Features

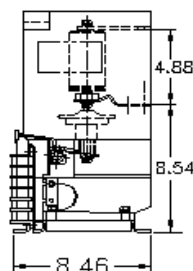
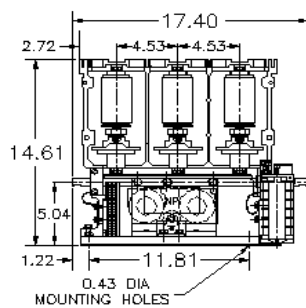
- **Environment Resistant:** Ideal for use in high dust areas. Switching arc is contained within the vacuum bottle, shielding the main contacts.
- **Reduced Maintenance:** Vacuum bottle contacts have long life with virtually no maintenance required.
- **No External Surge Protection:** Special main contact materials minimize chopping current. No surge suppresser required.
- **Designed for Safety:** High voltage and low voltage parts are totally separated by an insulated barrier (non-flammable molded frame).
- **Electronic Control Drive Unit:** All contactors include electronic control of the operating coil which offers a wide control voltage of 100-240Vac & 100-250Vdc, anti-chopping feature and reduce power consumption.
- **CV-10H (13.8/15kV) Contactor:** The CV-10H contactor is now rated 400A inductive & 450A thermal, and is available in latched non-latched versions. The CV-10HB is designed for capacitor switching and is rated up to 13.8kV.
- **Designed for Longer Wear:** Unique vertical magnetic arc dispersion system, USA patent (HCV-1KAU, HCV-6KAU & HCV-6KALU).
- **Compact and Lightweight:** Smaller than air break contactors of equivalent electrical performance.
- **Conformity to International Standards:** Conforms to international industrial standards such as UL, CSA, AS, BS, NEMA, and IEC. Consult factory on each series.
- **Higher Interrupting Performance:** Afford a wide margin of protective coordination with any type of power fuse resulting in increased electrical safety and reliability.



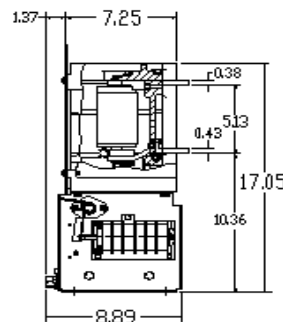
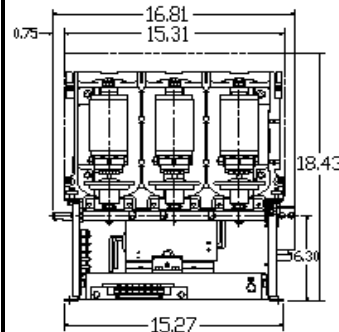
HCV-1JBU/1KAU



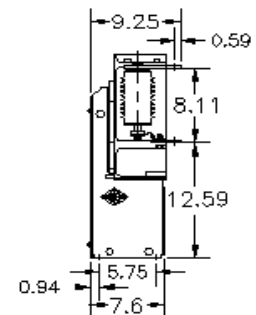
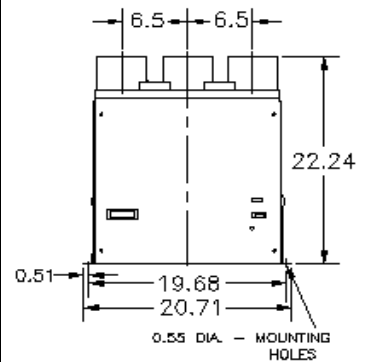
HCV-5HA



HCV-6KAU



CV-10H



Technical Data

CONTACTOR MODEL	HCV-1JBU	HCV-1KAU	HCV-5HA	HCV-5HAL*	CV-10HA(L)	CV-10HB(L)	HCV-6KAU	HCV-6KALU*
Rated Voltage	208-1500V		2400/4200/6900V(7.2kV max)		12/15kV	12/13.8kV (max.)	2400V/4200/6900V(7.2kV max)	
Rated Operational Current	600A	720A	400A		400A	400A	720A	
Rated Thermal Current	600A	720A	450A		450A		800A	
Interrupting Current	42,000A		7000A (4.5kA @7.2kV)		5kA/4kA	5000A	7200A	
Peak Withstand Current	-	85 kA (Peak)	15.8kA		12.5kA		20kA	
Short-circuit Making/Breaking Current IEC 60470 (2000)	6000A (100 times)	7200A (100 times)	6.3kA		5kA/4kA	5kA	8.0kA	
Class E1 MVA	-		25/50 (36/60)		120		30/60/85	
Class E2 MVA	-		200/400/570		1200MVA		200/400/600	
Withstand Overload Current	3600A - 30s	4320A - 30s	2400A - 30s		1920A - 30s		4320A - 30s	
	6000A - 2s	7200A - 2s	4000A - 12s		-		-	
	9000A - 1s	10800A - 1s	6300A - 2s		8000A - 1s		10,800A - 1s	
	30,000A - 0.05s	36,000A - 0.05s	-		-		-	
Overcurrent Strength (Peak Value)	-		-		See Coordination Below		85kA (PEAK)	
Coordination w/Current-Limiting Fuses	50kA	45kA	-		Prospective Short-circuit Current 50kA Cut-off Current 36kA Peak		-	
Switching Frequency	1200/Hr		1200/Hr	300/Hr	300/Hr (Latched type 120/Hr)		600/Hr	300/Hr
Mechanical Life***	2.5 M		2.5M	250k	250k		1M	200k
Electrical Life***	500 K		250k	250k	100k		200k	
Impulse Withstand	15 kV		60kV		75kV		60kV	
Dielectric Strength	5.5kV - 1 min.		22kV - 1 Minute		28kV - 1 Min (42kV)**		22kV - 1 Minute	
Closing Time (@120Vac)	60 - 80 ms		75 - 100 ms		120 - 145 ms		80-100 ms	
Opening Time (@120Vac)	50 - 65 ms		20 - 30 ms		30 - 40 ms		40-55 ms	
Arcing Time	10 ms or less		10 ms or less		10 ms or Less		10 ms or Less	
Pick-Up Voltage	85% (Hot) - 70% (Cold)		85% (Hot) - 70% (Cold) AC or DC					
Drop-Out Voltage	20% or more of rated control voltage (cold)		50% (Hot) - 40% (Cold) AC or DC					
Tripping Voltage	-		60% or less of Coil Rating DC (cold)					
Control Voltage	Standard	100-240 Vac/dc		120Vac 50/60 Hz		100-240Vac/100-250Vdc		115-240Vac/125-250Vdc
	Optional	-		240Vac/125Vdc/250Vdc		-		-
Control Circuit	Closing	1080 VA		5.4A Peak @120Vac 670VA (AC) - 700W (DC)		7.2A Peak @120Vac 864VA (AC) - 900W (DC)		6-7.0A @120Vac 840VA (AC) - 875W (DC)
	Holding	50 VA		0.12A Avg. @120Vac 85VA (AC) - 85W (DC)		0.16A Avg. @120Vac 80VA (AC) - 90W (DC)		0.8-1.0A @120Vac 48VA
Burden	Tripping*		-		4.8A Peak @125Vdc		4.8A Peak @125Vdc	
Auxiliary Contact Ratings	Arrangement	3NO-3NC		3NO-3NC	2NO-2NC	4NO-2NC (Latched type 2NO-1NC)		3NO-3NC 2NO-2NC
	Current	10A (A600)						
	Voltage	600V Max - 48V Min						
	AC	720VA (P.F. 0.35)						
Application Conditions	DC	60W (L/R 150 ms)						
	Altitude w/o Derate	Lower than 3300ft (1000m)						
	Ambient	-5 to +40 °C						
	Relative Humidity	45 to 85%						
Vibration	Max. 20 Hz - 1G							
	Shock	Max. 30G						
Weight - lbs. (kg)	59.5 (27)	61.7 (28)	43 (19.5)	44 (20)	88 (40)	91 (41)	60 (27)	62 (28)

* - Latched type. ** - Special withstand voltage available by request. ***- Maximum required test. Actual life under normal conditions are greater.

Low Voltage Application Table

Model Number	HCV-1JBU	HCV-1KAU		
Rated Voltage	1500 V	1500 V		
Rated Current	600 A	720 A		
Rated Frequency	50/60 Hz			
3 Phase Motor	208 V	200 HP	-	
	230 V	250 HP	300 HP	
	380V	300 HP	450 HP	
	460 V	500 HP	600 HP	
	575 V	600 HP	700 HP	
	762/796 V	800 HP	900 HP	
3 Phase Capacitor	1500 V	1600 HP	2000 HP	
	240 V	200-kVAR	250-kVAR	
	480 V	400-kVAR	500-kVAR	
	600 V	500-kVAR	600-kVAR	
1 and 3 Phase Transformer	120 V	1 φ	60 kVA	75 kVA
		3 φ	100 kVA	130 kVA
	230 V	1 φ	120 kVA	140 kVA
		3 φ	200 kVA	240 kVA
	277 V	1 φ	150 kVA	170 kVA
		3 φ	260 kVA	290 kVA
	460 V	1 φ	240 kVA	280 kVA
		3 φ	400 kVA	480 kVA
	575 V	1 φ	320 kVA	350 kVA
		3 φ	560 kVA	600 kVA
	762/796 V	1 φ	400 kVA	460 kVA
		3 φ	720 kVA	800 kVA
	1500 V	1 φ	800 kVA	900 kVA
		3 φ	1400 kVA	1500 kVA
Discharge Lighting	1500 V	600 A	-	

Medium Voltage Application Table

Model	System Voltage	0.8 PF Ind./Syn Motor	1.0 PF Syn Motor	3 Phase Transformer	3 Phase Capacitor
HCV-5HA(L) (400A)	2.2-2.5kV	1750HP	2000HP	1500kVA	1500kVAR
	3.0-3.3kV	2250HP	2500HP	2000kVA	2000kVAR
	4.0-5.0kV	3000HP	3500HP	3000kVA	2000kVAR
	6.0-6.6kV	4500HP	5000HP	4000kVA	2000kVAR
CV-10HA(L) (400A)	6.9-7.2kV	3500HP	4000HP	3000kVA	Not Applicable
	11-12kV	5500HP	6000HP	5500kVA	
	13.8kV	7000HP	7500HP	6500kVA	
CV-10HB(L) (320A cont. 230A breaking)	2.2-2.5kV	Not Applicable	Not Applicable	Not Applicable	1500kVAR
	3.0-3.3kV				2000kVAR
	4.0-5.0kV				2000kVAR
	6.0-6.6kV				3000kVAR
	6.9-7.2kV				3000kVAR
HCV-6KA(L)U (720A)	2.2-2.5kV	2500HP	3000HP	2500kVA	2000kVAR
	3.0-3.3kV	3000HP	3500HP	3500kVA	2000kVAR
	4.0-5.0kV	4500HP	5000HP	4500kVA	2000kVAR
	6.0-6.6kV	6000HP	7000HP	7000kVA	2000kVAR

Application data is based on general load data and standard applications. Lower limitations may apply on specific applications (i.e. applications above 3300 feet).

TOSHIBA

TOSHIBA INTERNATIONAL CORPORATION

INDUSTRIAL DIVISION

13131 West Little York Road, Houston, Texas 77041

Tel 713/466-0277 Fax 713/466-8773

US 800/231-1412 Canada 800/872-2192 Mexico 01/800/527-1204

www.toshiba.com/ind