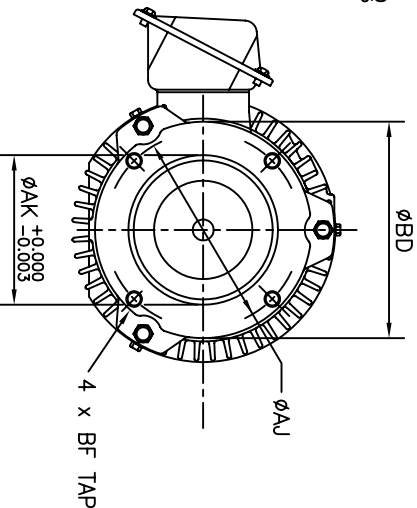
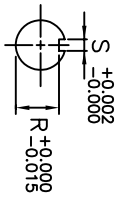
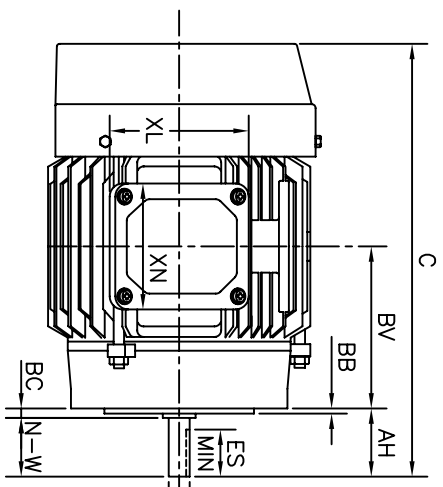
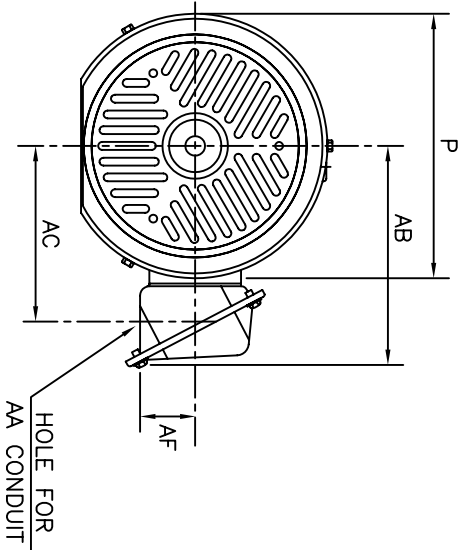


INDEX	MDSL0011-08
REV. LEVEL	1
SHEET	1 OF 1

UNITS
BI-DIRECTIONAL
BY CONNECTION
CHANGE.



FRAME SIZE	FLANGE								UNITS: INCHES
	AH	AJ	AK	BB	BC	BD	BF TAP	BV	
56C	2.06	5.875	4.500	0.16	0.19	6.50	3/8"-16UNC	4.86	

FRAME SIZE	CONDUIT BOX							
	C	P	AA	AB	AC	AF	XL	XN
56C	13.2	8.0	1.06	6.7	5.3	1.7	4.2	3.8

FRAME SIZE	SHAFT EXTENSION			KEY SEAT			BEARINGS		MAXIMUM WEIGHT
	N-W	V	U	R	S	ES	LS	OS	
56C	1.88	1.63	0.625	0.517	0.188	1.41	6205ZZ	6205ZZ	55 lbs.

CERTIFIED DATA

ALL DATA SUBJECT TO CHANGE WITHOUT NOTICE FOR CONSTRUCTION USE ONLY CERTIFIED DATA

- NOTES:
1. DIMENSION V REPRESENTS LENGTH OF STRAIGHT PART OF SHAFT.
 2. CONDUIT BOX MAY BE ROTATED IN 90° INCREMENTS AND MAY BE MOUNTED ON OPPOSITE SIDE ON SPECIAL ORDER.
 3. KEY DIMENSIONS EQUAL S x S x 1.38 (MOTOR SUPPLIED WITH KEY)
 4. MOTOR WEIGHT SHOWN IS MAXIMUM HORSEPOWER IN FRAME.

CUSTOMER: _____ P.O. NO.: _____ TAG NO.: _____
 MOTOR MODEL NO.: _____ TOSHIBA FILE NO.: _____
 HP: _____ RPM (SYN.): _____ VOLTAGE: _____ Hz: _____
 FRAME SIZE: _____ LOG NO.: _____ LOG REV. LEVEL: _____
 REMARKS: _____
 PER: _____ ISSUE DATE: _____ SUPERSEDES: _____

TOSHIBA/HOUSTON

TOTALLY-ENCLOSED
FAN-COOLED
ROUND BODY
WITH C-FACE FLANGE
Fr. 56C