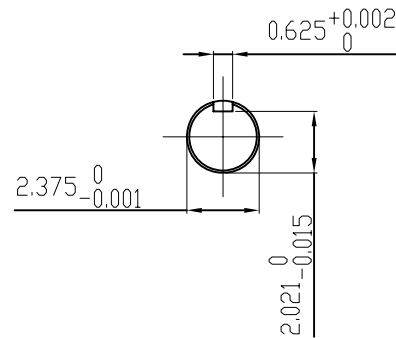


TECHNICAL INFORMATION

1. BEARING LUBRICATION DE: CHEVRON SRI
ODE: CHEVRON SRI
2. BEARING TYPE DE: 6313C3
ODE: 6313C3 INSULATED
3. WINDING TEMP. DETECTORS
NUMBER AND TYPE: 6xRTD(Pt0°C-100ohm)
LOCATION: IN STATOR SLOT
4. BEARING TEMP. DETECTORS
NUMBER AND TYPE: _____
5. SPACE HEATER 1 PHASE
VOLTS: 120 WATTS: 240
6. ROTATION: CCW VIEWED FROM NON DRIVE END
THIS MOTOR IS UNI DIRECTIONAL
7. MOTOR PAINT COLOR: GRAY
8. APPROX. WEIGHT: 5000 Lbs
9. ACCESORIES:



UNITS: INCHES

DRAWING LIST

MAIN TERMINAL BOX
130-7622-55

AUX TERMINAL BOX FOR

SPACE HEATER	130-7520-50
R.T.D.	130-7522-51
THERMISTOR	N/A

PRODUCTION # N/A

0 FIRST ISSUE BCS 4/24/07

NO.	REVISION	BY	DATE
-----	----------	----	------

MOTOR OUTLINE FOR THREE PHASE INDUCTION MOTOR

CUSTOMER NAME				P.O. NO.	MOTOR TAG NO.
OUTPUT HP	POLE 2	VOLTAGE V	FREQUENCY Hz	FULL LOAD SPEED (min ⁻¹)	TOSHIBA MODEL NO.
TYPE	FORM	INS. CLASS F	RATING CONT.	FRAME 5009/10/11USS	S.F. ENCLOSURE TEFC

TOSHIBA INTERNATIONAL CORPORATION
HOUSTON, TEXAS U.S.A.

3rd ANGLE PROJ.	PREPARED BY: B SIDLE	DATE: 4/24/07	CHECKED BY: S Johnson	DATE: 4/26/07	DRAWING NO.: MDSL0071-14	REV. 0
-----------------	----------------------	---------------	-----------------------	---------------	--------------------------	--------