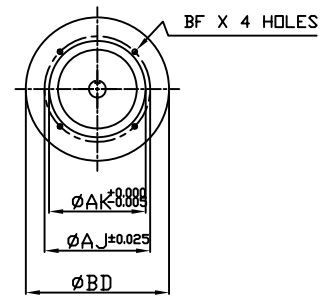
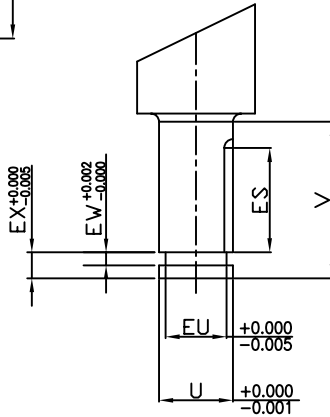
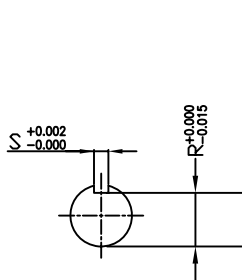
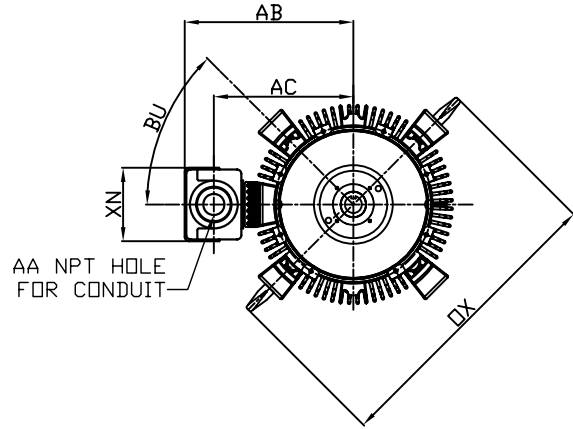


NOTE:
2" J" HOOKS
180° APART
ARE ONLY FOR
LIFTING MOTOR



ALL DATA SUBJECT TO CHANGE WITHOUT NOTICE

UNITS: INCHES

FRAME SIZE	P-FLANGE DIMENSIONS							MOTOR DIMENSIONS				
	BB	BE	BF	BD	BV	AK	AJ	AG	C	P	OX	BU
N449HP16	0.25	1.00	0.69	16.5	27.0	13.5	14.75	64.5	69.0	28.87	43.7	45"
N449HP20	0.25	1.00	0.69	20.0	27.0	13.5	14.75	64.5	69.0	28.87	43.7	45"
N449HP24	0.25	1.00	0.69	24.5	27.0	13.5	14.75	64.5	69.0	28.87	43.7	45"
N449LP16	0.25	1.00	0.69	16.5	27.0	13.5	14.75	64.5	69.0	28.87	43.7	45"
N449LP20	0.25	1.00	0.69	20.0	27.0	13.5	14.75	64.5	69.0	28.87	43.7	45"
N449LP24	0.25	1.00	0.69	24.5	27.0	13.5	14.75	64.5	69.0	28.87	43.7	45"

POLE	FRAME	BEARINGS		MAXIMUM WEIGHT
		LS	OS	
2	HP	6313	6315 X 2	3200 LBS
	LP	6313	7315 X 2	
4 ~ 8	HP	6318	6315 X 2	
	LP	6318	7315 X 2	

CONDUIT BOX					
AA	AB	AC	AF	XL	XN
3.ONPT	24.2	19.62	9.15	15.59	11.02

POLE	HORSEPOWER	SHAFT DIMENSIONS								
		AH	EU	U	V	R	S	ES	EW	EX
2	250~400	4.50	1.75	2.125	4.50	1.845	0.500	3.03	0.375	0.75
	250~300	4.50	1.75	2.125	4.50	1.845	0.500	3.03	0.375	0.75
4	350~400	5.00	2.00	2.375	5.00	2.021	0.625	3.53	0.375	0.75
	200	4.50	1.75	2.125	4.50	1.845	0.500	3.53	0.375	0.75
6	250	5.00	2.00	2.375	5.00	2.021	0.625	3.03	0.375	0.75
	300~350	5.00	2.25	2.625	5.00	2.275	0.625	3.03	0.375	0.75
8	150	5.00	2.00	2.375	5.00	2.021	0.625	3.53	0.375	0.75
	200~250	5.00	2.25	2.625	5.00	2.275	0.625	3.53	0.375	0.75

CUSTOMER: _____ P.O. NO.: _____ TAG NO.: _____
 MOTOR MODEL NO.: _____ TOSHIBA FILE NO.: _____
 HP: _____ RPM (SYN.): _____ VOLTAGE: _____ Hz: _____
 FRAME SIZE: _____ LOG NO.: _____ LOG REV. LEVEL: _____
 REMARKS: _____

 PER: _____ ISSUE DATE: _____ SUPERSEDES: _____

INDEX	MDSL0151-09
REV. LEVEL	0
SHEET	1 OF 1

TOSHIBA/HOUSTON

VERTICAL SOLID SHAFT
 TOTALLY-ENCLOSED FAN COOLED
 ROUND BODY P-FLANGE
 FR.N449HP/LP